



Korkmaz
endüstriyel pompalar

Korkmaz
endüstriyel pompalar

CONTACT US

Emek Mah. Atatürk Cad. No:4/1 İç kapı No:3
Sancaktepe, İstanbul, Türkiye

P: +90 216 364 71 74

E: info@korkmazendustri.com.tr

W: www.korkmazendustri.com



KORKMAZ TWIN SCREW PUMPS



KTS SERIES

INDUSTRIAL POWER and
THE PEAK OF ENGINEERING

Korkmaz Industry Pump Machine Limited Company

Korkmaz Endüstri was founded in 1988 by Yakup Korkmaz and has become one of Turkey's leading industrial equipment manufacturers. With our high-quality products and reliable partnerships, we have strengthened our presence in global markets. We export to over 25 countries, primarily in North Africa, the Middle East, the Turkic republics, and Eastern Europe. Our innovative solutions increase our competitiveness, setting us apart in the industry. As the first company to produce lobe pumps in Turkey, we offer tailored solutions to critical sectors. With a vision to solidify our leadership in global markets, we continue to provide high-quality services to our customers.



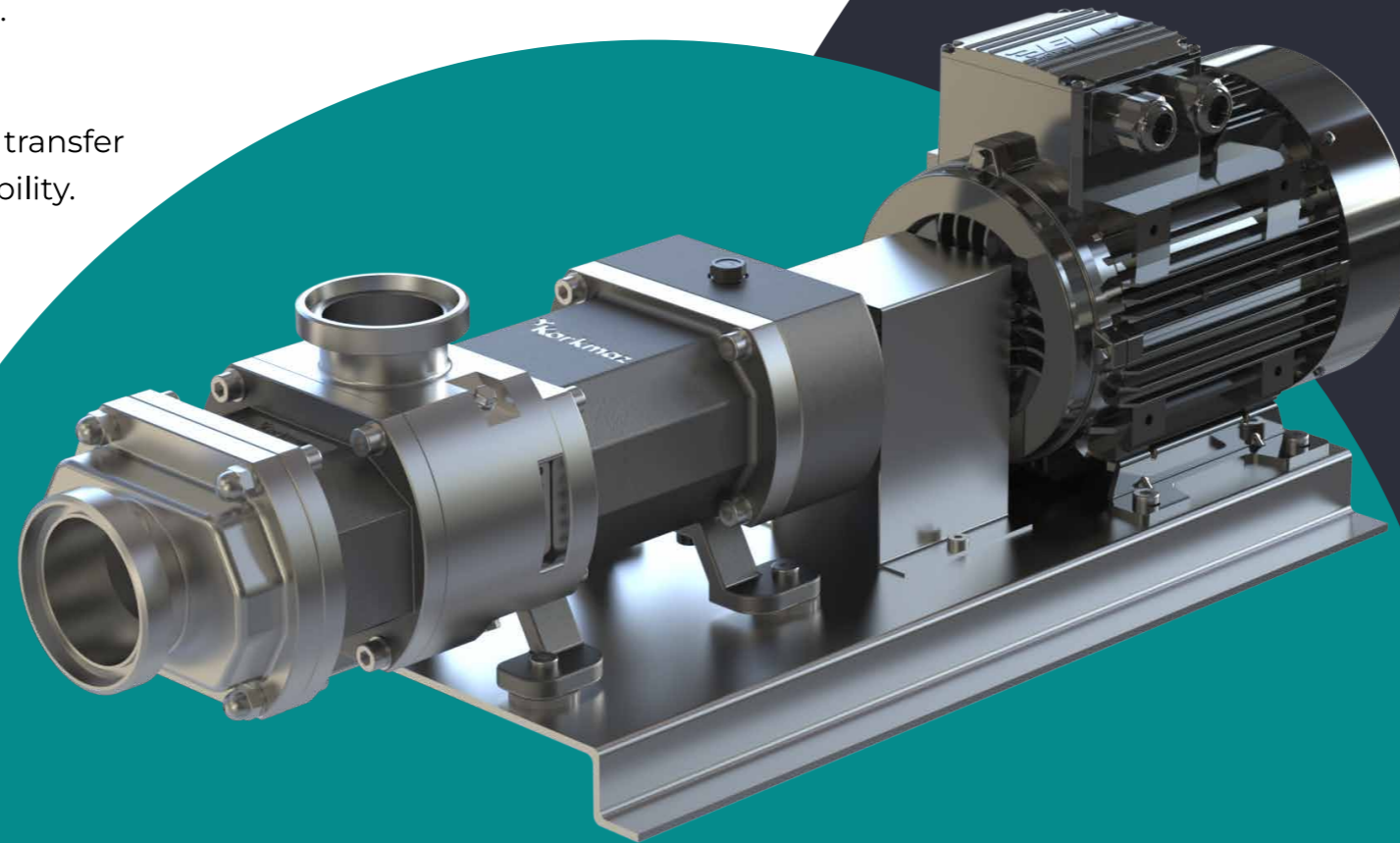
BROCHURE CONTENT

Why Twin Screw?	04
Advantages	06
Screw Pitch Selection	10
Application Areas	12
Highlights	14
Tecnical Data	15

WHY TWIN SCREW PUMP?

At Korkmaz Endüstri, our Twin Screw Pumps, developed to meet the most complex needs of industrial processes, represent the intersection of engineering excellence and advanced technology.

- ✓ With their twin screw design, they ensure the precise and continuous transfer of fluids with varying viscosities, thereby maximizing the efficiency of your operations.
- ✓ These pumps are not only top-tier in fluid transfer but also set the standard for safety and durability.
- ✓ Manufactured with high-quality materials, Korkmaz Twin Screw Pumps exhibit superior resistance to abrasive and corrosive fluids, delivering long-lasting performance.
- ✓ Their minimal maintenance requirements and low operating costs make your business processes more efficient.



KTS SERIES PERFORMING DATA

PUMP	KTS-65
⊕ MAX PRESSURE (bar)	16
⊕ MAX CAPACITY (m ³ /h)	20
≡ MAX VISCOSITY (cP)	1.000.000
° TEMPERATURE RANGE (°C)	0-150

The maximum bar and capacity values stated are based on tests performed under 300 cycles, a water-density product and 1 bar pressure. Performance differences may be observed at different pressures, turnover rates or product densities.

Korkmaz Twin Screw Pumps are safely used in various industries, including dairy products, food, beverages, and home and personal care.

- ✓ The quiet operation and low vibration levels provide a peaceful and uninterrupted working experience in the pro-
- ✓ With their energy-efficient design, they offer an environmentally friendly solution while also reducing your operating expenses.
- ✓ They make a significant difference in these sectors with their high performance and reliability.
- ✓ Customizable to meet the needs of your business, these pumps offer the best solution for fluid transfer.

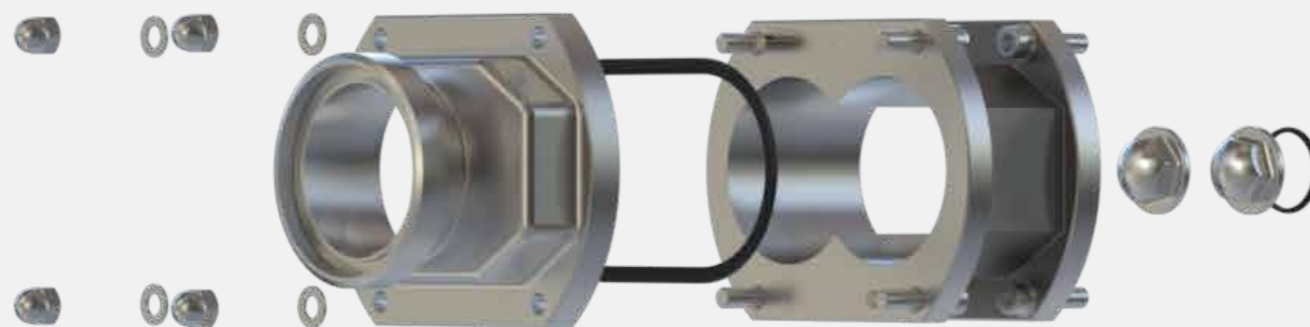
ADVANTAGES OF TWIN SCREW PUMP

Twin screw pumps deliver high performance across a wide range of fluid viscosities, making them ideal for both thin and thick liquids. Their twin screw design ensures smooth and uninterrupted fluid transfer, which is critical for maintaining product quality.



These pumps operate with low vibration and noise levels, creating less noise in the work environment and reducing mechanical stress. With their self-priming capability, they can be safely used with gas-containing fluids or in partial vacuum conditions.

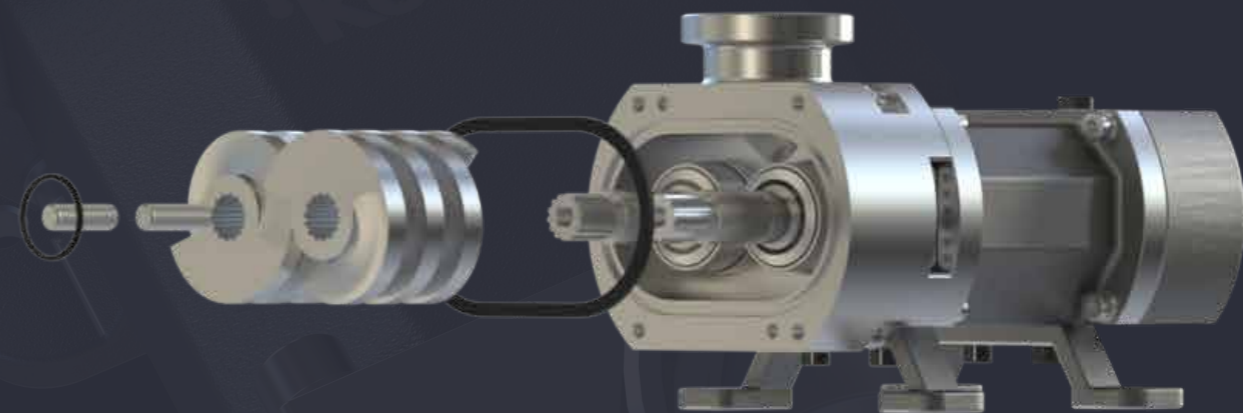
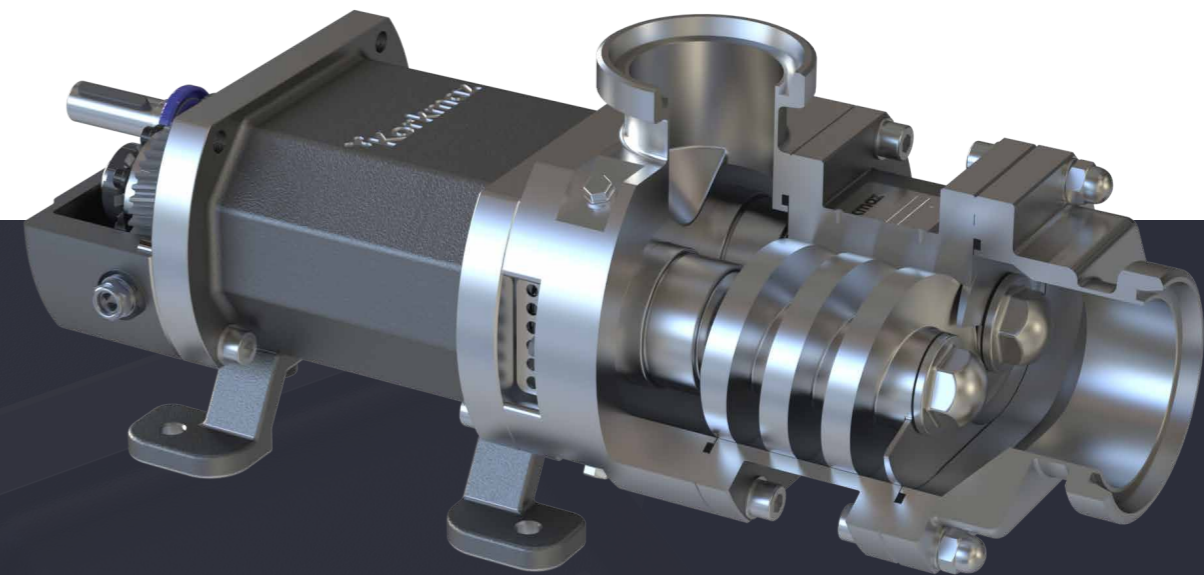
Twin screw pumps function effectively across a wide temperature range, providing reliable performance at both low and high temperatures. Additionally, their ability to handle mixtures containing both liquid and gas makes them a versatile and flexible choice for many industries.



EVERY PART IS A MASTERPIECE

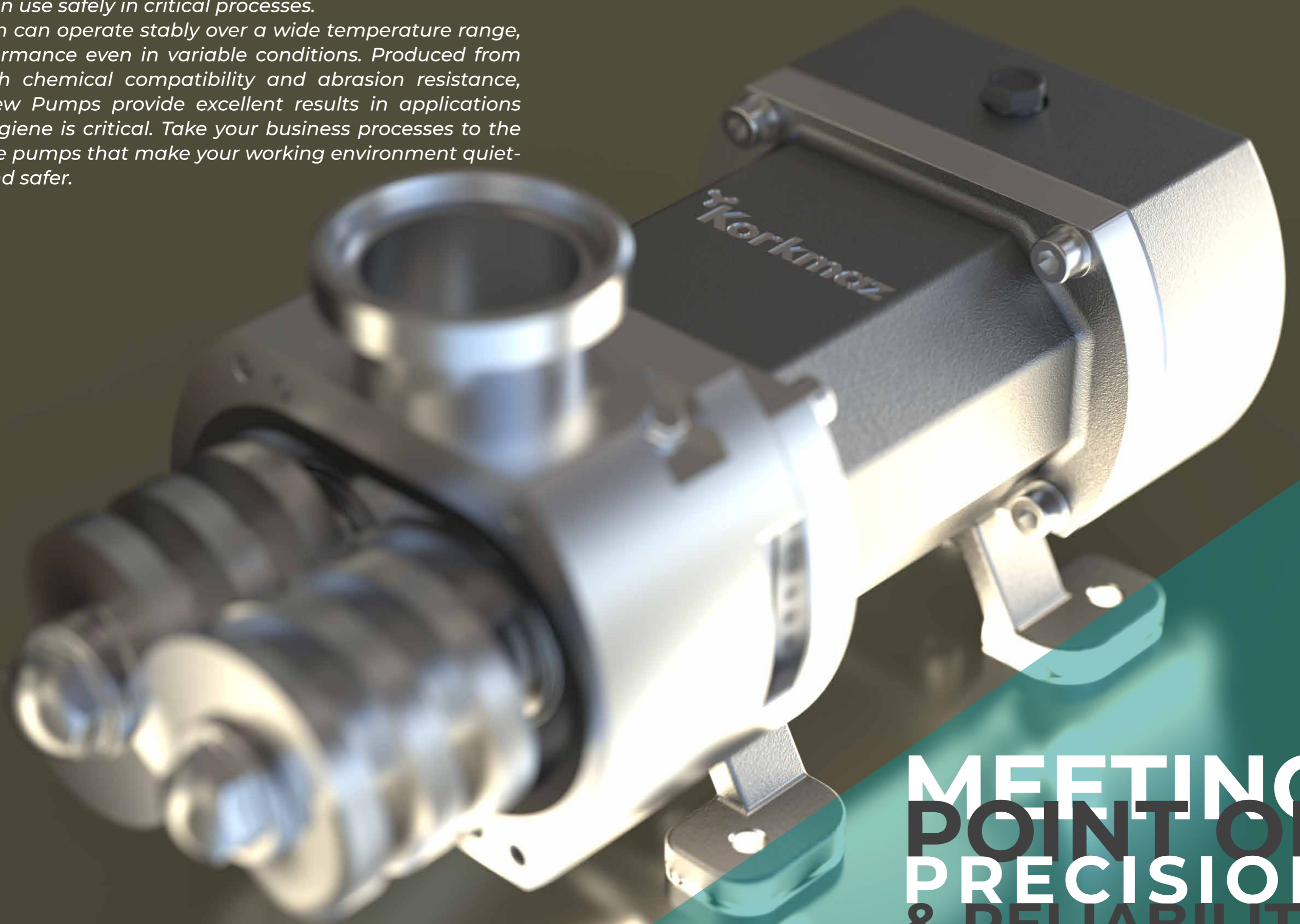
The components meticulously assembled for maximum performance and durability showcase how Korkmaz Twin Screw Pumps deliver superior performance under all challenging conditions. The robust structure and flawless operation reflect our commitment to the highest quality standards.

Exceptional wear resistance is achieved in the pump's critical components, with tungsten used in the mechanical seals. The EPDM O-rings provide chemical resistance and flexibility, while the 316L stainless steel used on all surfaces in contact with the product guarantees the highest level of food safety and corrosion resistance. Each material is carefully selected to ensure long-lasting and reliable performance.



Korkmaz Twin Screw Pumps make a difference not only with their strong and durable structure, but also with their superior performance in processes requiring high precision. These pumps, which bear the traces of our engineering expertise and innovative approach in every detail, offer a solution that you can use safely in critical processes.

These pumps, which can operate stably over a wide temperature range, exhibit stable performance even in variable conditions. Produced from materials with high chemical compatibility and abrasion resistance, Korkmaz Twin Screw Pumps provide excellent results in applications where industrial hygiene is critical. Take your business processes to the next level with these pumps that make your working environment quieter, more efficient and safer.



**MEETING
POINT OF
PRECISION
& RELIABILITY**

SCREW PITCH SELECTION: A CRITICAL DECISION FOR TWIN SCREW PUMPS



The efficient operation of twin screw pumps depends on the correct determination of the screw pitch.

Screw pitch is a critical factor that directly affects the pump's performance and must be optimized according to various operational needs.

Below, we explain why screw pitch selection is important and the criteria on which this choice should be based.

The Importance of Screw Pitch Selection

Screw pitch refers to the distance the screw travels with each rotation. Different screw pitches affect the pump's performance in various ways:

- **Particles and Solids:** If the material being conveyed contains solids, it is important that the screws are designed to prevent jamming. Choosing the right pitch and tolerance ensures that particles are transported without damage.
- **Shear Sensitivity:** When transporting delicate materials, the screw pitch must be optimized to prevent damage to the material. Screws designed specifically for shear-sensitive materials help preserve product integrity.



- **Differential Pressure:** Screw pitch size is inversely proportional to differential pressure. Smaller screw pitches provide higher pressure differences. Such screw designs are ideal for applications requiring high pressure at lower flow rates.
- **Volumetric Flow Rate:** As the screw pitch size increases, the volumetric flow rate the pump can handle also increases. This feature is crucial in processes that require the transfer of large volumes of fluid.



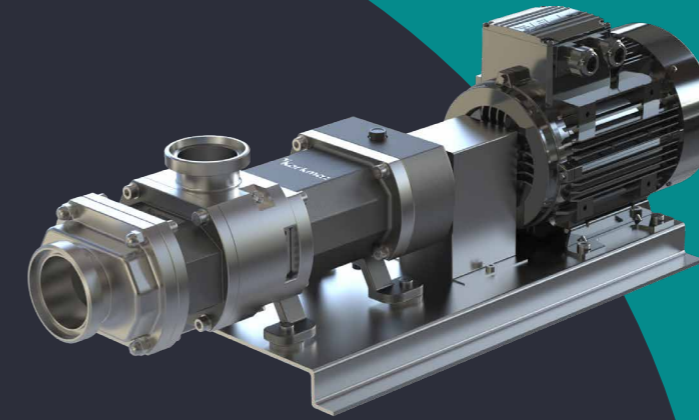
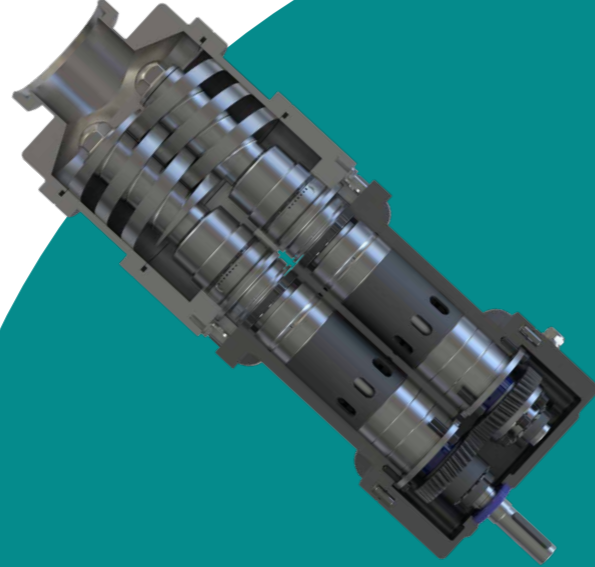
The smaller the screw pitch, the lower the NPSHR (Net Positive Suction Head Required) values.

APPLICATION AREAS & SECTORAL SOLUTIONS

Korkmaz Twin Screw Pumps offer high-performance solutions that can be used safely in many industries. From food and beverage to chemistry, from pharmaceuticals to personal care, they are designed to meet your needs in a wide range of industries.

Food & Beverage

Hygiene and precision are very important in the food and beverage industry. Our Twin screw pumps handle viscous products such as dairy products, fruit juice and yogurt in the best way without disrupting their texture. These pumps provide an uninterrupted flow in your production line, while keeping costs under control with low energy consumption.

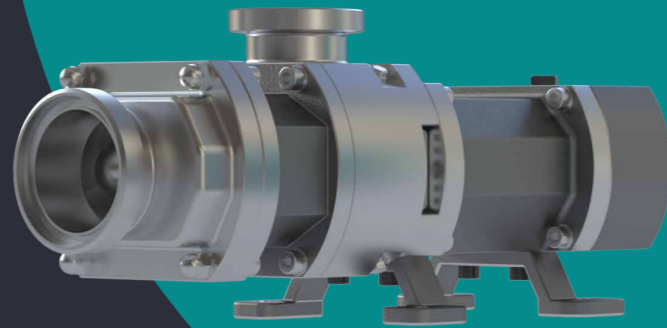


Chemical & Pharmaceutical

Safe and efficient production is critical in the chemical and pharmaceutical industries. Korkmaz Twin Screw Pumps are an excellent option for dealing with abrasive and corrosive substances. It also helps you maintain the sterile conditions required in pharmaceutical production.

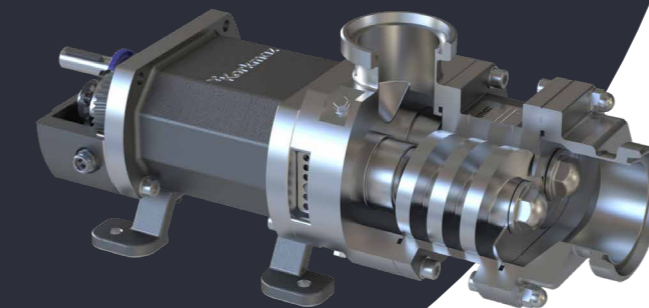
Cosmetics & Personal Care

When high viscosity products such as lotions, creams and shampoos need to be processed, our twin screw pumps ensure a smooth flow. Quiet and low vibration operation creates a peaceful atmosphere in your production environment.



General Industrial Applications

If you are looking for reliable performance in all kinds of industrial processes, Korkmaz Twin Screw Pumps are the right choice for you. It offers stable performance even in wide temperature ranges and harsh conditions, helping you to continue your work without interruption.



As Korkmaz Industry, we are here to meet your special needs in every sector. With our twin screw pumps, we are at your side to make your business processes more efficient and reliable.

HIGHLIGHTS

01 Superior Power and Durability

Korkmaz Twin Screw Pumps are designed to deliver high performance even in challenging industrial conditions. Produced with advanced engineering and high-quality materials, these pumps ensure that your processes run smoothly and efficiently. Reliability, energy efficiency, and long-lasting use are the core principles of Korkmaz's industrial solutions. Customizable to meet your needs, these pumps support the success of your business by meeting the highest quality standards.

02 Single Mechanical Seal

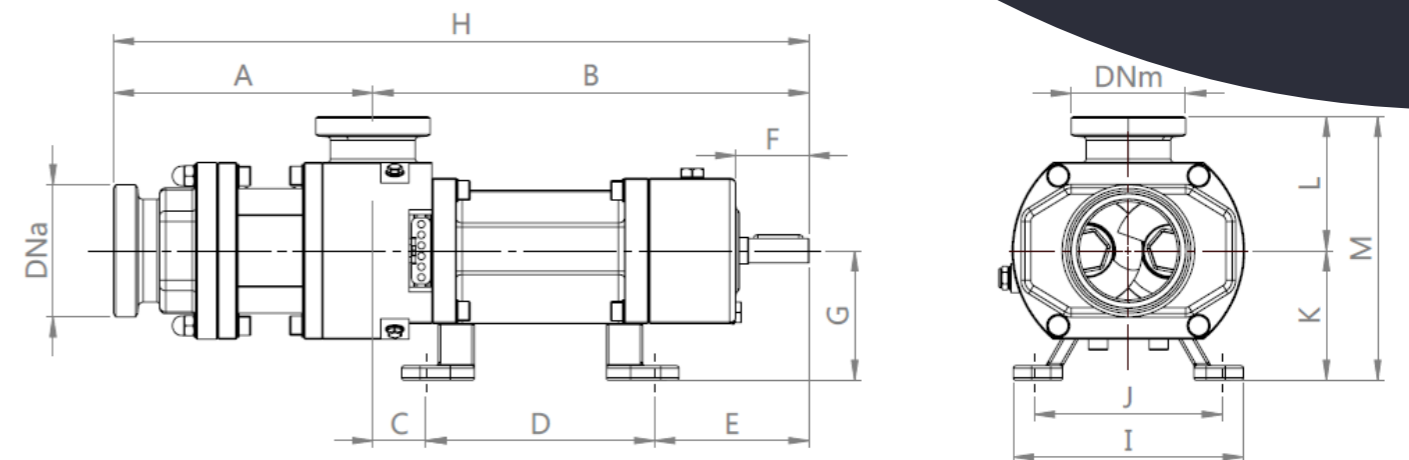
Single mechanical seals are ideal for simpler and more economical applications. With one stationary and one rotating face, these seals provide effective sealing under low pressure and temperature conditions. Their simple design allows for easy installation and generally does not require water or oil-based cooling fluids.

03 Double Flushed Mechanical Seal

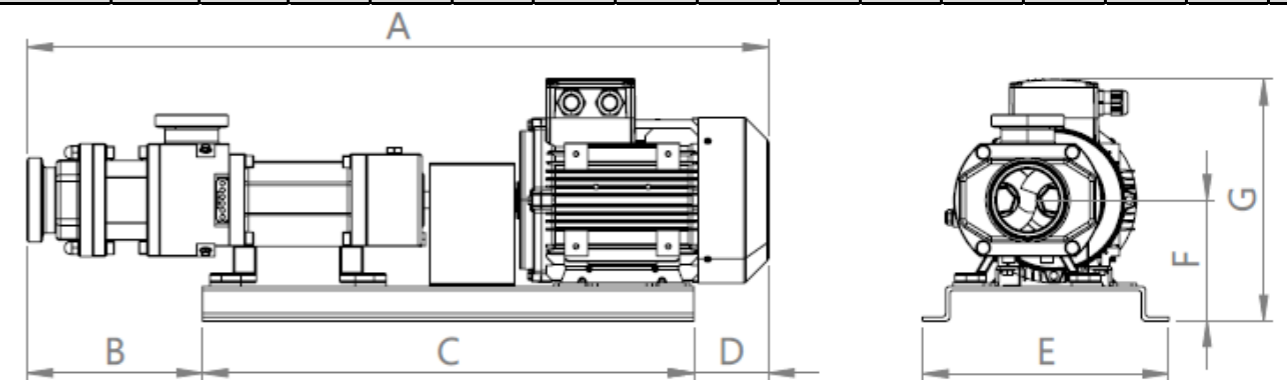
Double mechanical seals are preferred in the chemical and food industries to ensure high safety and performance. With two stationary and two rotating seal faces, they offer maximum sealing, which is crucial when handling hazardous or sensitive materials. Water or oil-based fluids are used for cooling and lubrication, reducing friction and wear on the seal faces, thus providing long life and efficient operation. The cartridge-type design allows for easy installation and maintenance.



TECNICAL DATA



Pump Type	DNa	DNm	A	B	C	D	E	F	G	H	I	J	K	L	M
KTS.65	80 / 65	65,00	214,30	360,25	43,80	189,00	127,45	60,45	107,15	574,55	190,00	155,00	107,15	110,10	218,25



Pump Type	A	B	C	D	E	F	G
KTS.65	965,15	228,10	640,00	97,10	320,00	157,00	314,00

The specified dimensions may vary depending on the motor and reducer combinations. For different brands and models, engine sizes may increase or decrease depending on pressure and capacity requirements. Therefore, it is important to verify appropriate dimensions for each application.