

Korkmaz
endüstriyel pompalar



Korkmaz
endüstriyel pompalar

CONTACT US

P : +90 216 364 71 74

E : info@korkmazendustri.com.tr

w : www.korkmazendustri.com

Emek Mah. Atatürk Cad.

No:4/1 İç kapı No:3

Sancaktepe, İstanbul, Türkiye



KLP SERIES

THE MEETING POINT OF PRECISION
& DURABILITY

KORKMAZ Lobe Pumps

KORKMAZ ENDÜSTRİ Pump Machine Limited Company

Korkmaz Endüstri was founded in 1988 by Yakup Korkmaz and has become one of Turkey's leading industrial equipment manufacturers. With our high-quality products and reliable partnerships, we have strengthened our presence in global markets. We export to over 25 countries, primarily in North Africa, the Middle East, the Turkic republics, and Eastern Europe. Our innovative solutions increase our competitiveness, setting us apart in the industry. As the first company to produce lobe pumps in Turkey, we offer tailored solutions to critical sectors. With a vision to solidify our leadership in global markets, we continue to provide high-quality services to our customers.



BROCHURE CONTENT

About Lobe Pump	04
Durability	06
Condition & Hygiene	07
Lobe Types	10
Carbide Surface Option	12
Technical Data	14
Performance Report	15

THE MEETING POINT OF PRECISION AND DURABILITY

At Korkmaz Industry, our Lobe Pumps, designed to offer perfect solutions for the most demanding industrial applications, represent a perfect harmony of precision and durability.

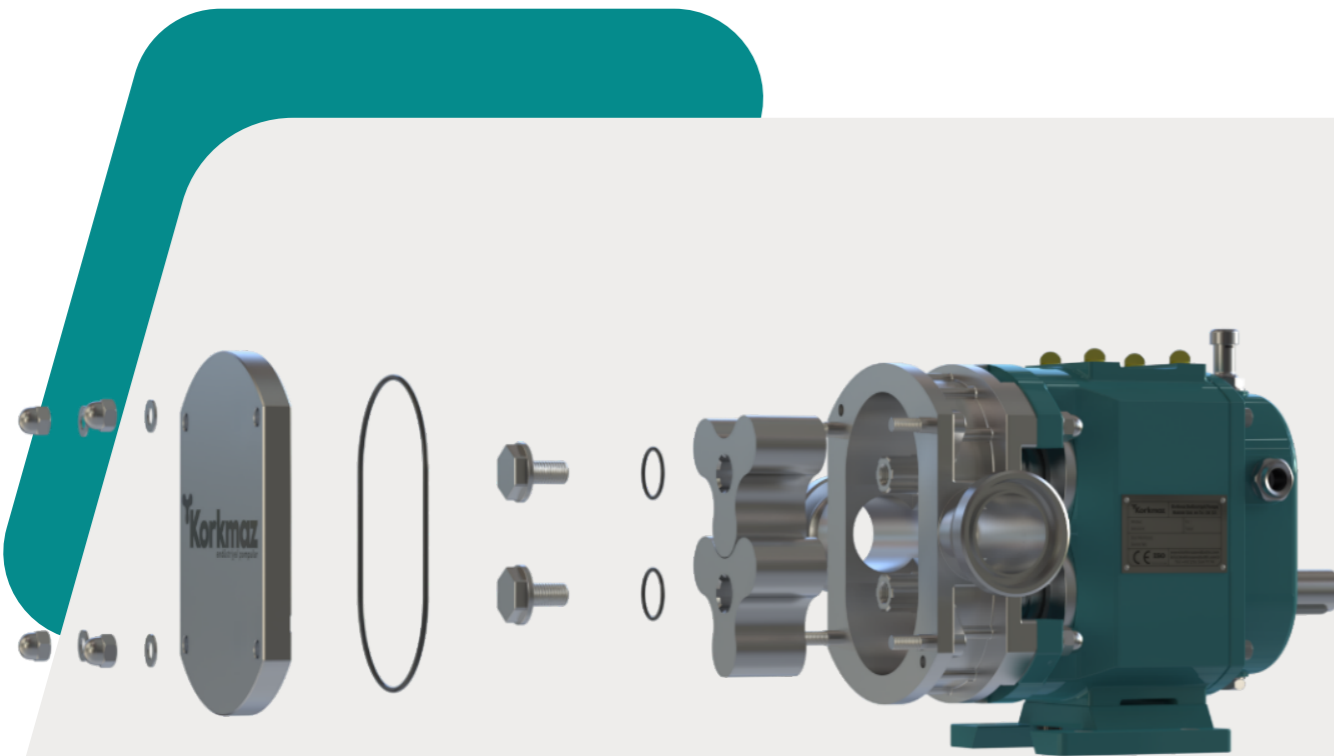
Thanks to their lobe structure, they transfer high-viscosity fluids and delicate liquids seamlessly, maximizing the efficiency and reliability of your processes.

These pumps are not only leaders in fluid transfer but also excel in hygiene, safety, and durability.

Manufactured with high-quality materials, Korkmaz Lobe Pumps exhibit superior resistance to abrasive and corrosive liquids, providing long-lasting and uninterrupted performance.

With their low maintenance requirements and minimal operating costs, they enhance your operational efficiency.

The quiet operation and low vibration levels ensure a peaceful and uninterrupted work experience in the production environment. Their energy-efficient design offers an environmentally friendly solution while also reducing your operating expenses.



Korkmaz Lobe Pumps are safely used in various sectors such as food, beverage, pharmaceuticals, and chemicals. They make a difference in these industries with their high performance and hygiene standards. Customizable to meet the needs of your business, these pumps offer the most reliable solution for precise fluid transfer.

DURABILITY

Korkmaz Lobe Pumps provide a long-lasting and reliable solution that operates with high precision in industrial processes.



& HYGIENE

Particularly in sectors where hygiene is paramount, Korkmaz Lobe Pumps maintain high standards and optimize your business processes.



With their wide range of applications and customizable design, they meet the diverse needs of your business.

CONDITION

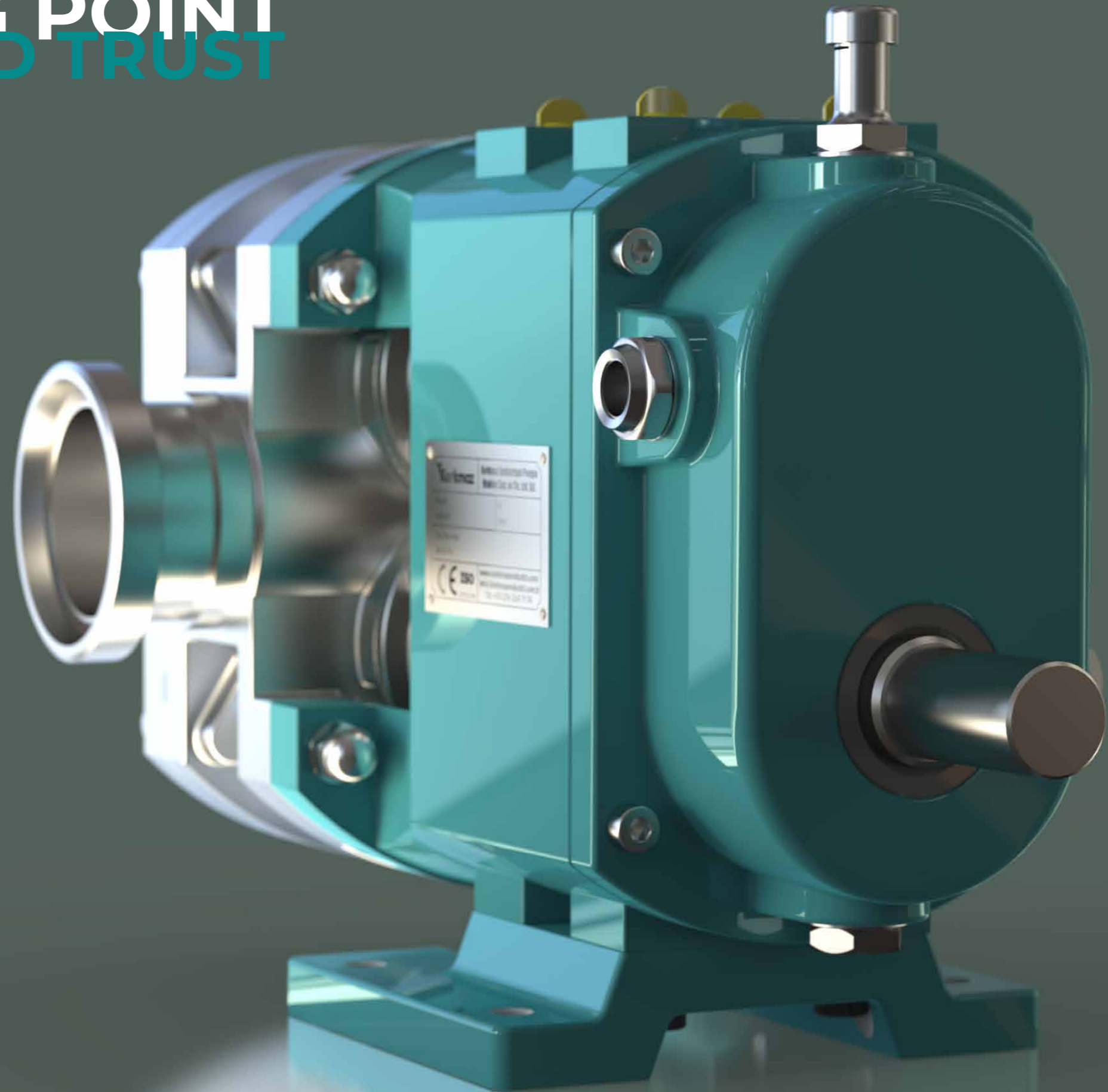
These pumps deliver stable performance even under challenging conditions, ensuring smooth operation in your production line. The high-quality materials used in their design offer superior resistance to abrasive substances. Additionally, these pumps save your business time with their low maintenance requirements and minimize costs with energy efficiency.



THE MEETING POINT OF POWER AND TRUST

With the perfect blend of precision and durability, Korkmaz Lobe Pumps not only move fluids forward, but also processes. With each component carefully designed, this pump offers reliable performance even in the toughest conditions of the industry. The KLP series, which manages to be one step ahead in its class, reflects both technological innovations and deep experience in the sector.

This engineering marvel, time-tested, with knowledge and experience in every part, has the power to carry you and your business into the future. Korkmaz Lobe Pumps are with you as a reliable guide and uninterrupted supporter in the journey of fluids.

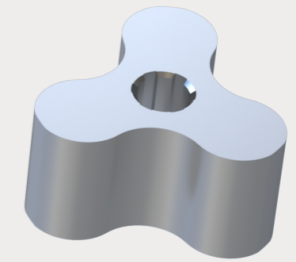
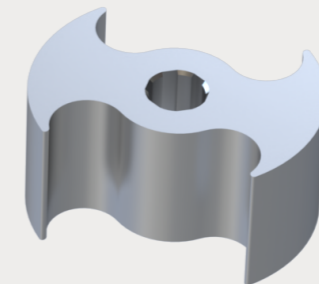
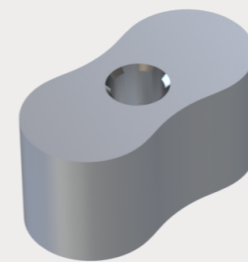
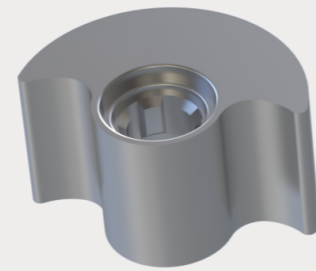


LOBE TYPES

The design of lobe pump rotors is a critical factor that directly influences the pump's performance. These rotors have a direct impact on variables such as pressure and capacity. Furthermore, the ability to control flow rates and handle fluids containing solid particles is closely related to the design of the rotors. Viscosity, as a variable, is also optimized according to the structural characteristics of the rotors.

The design of the rotors ensures that the lobe pump delivers optimal performance under varying process conditions. For instance, in applications requiring high pressure, the rotor structures are optimized to balance the pressure, while flow control takes precedence for fluids with low viscosity. For fluids containing solid particles, the rotors are designed to minimize the risk of clogging. This approach not only enhances the efficiency of the pump but also ensures long-lasting and durable operation.

The design of lobe pump rotors is a critical factor that directly influences the pump's performance. These rotors have a direct impact on variables such as pressure and capacity.



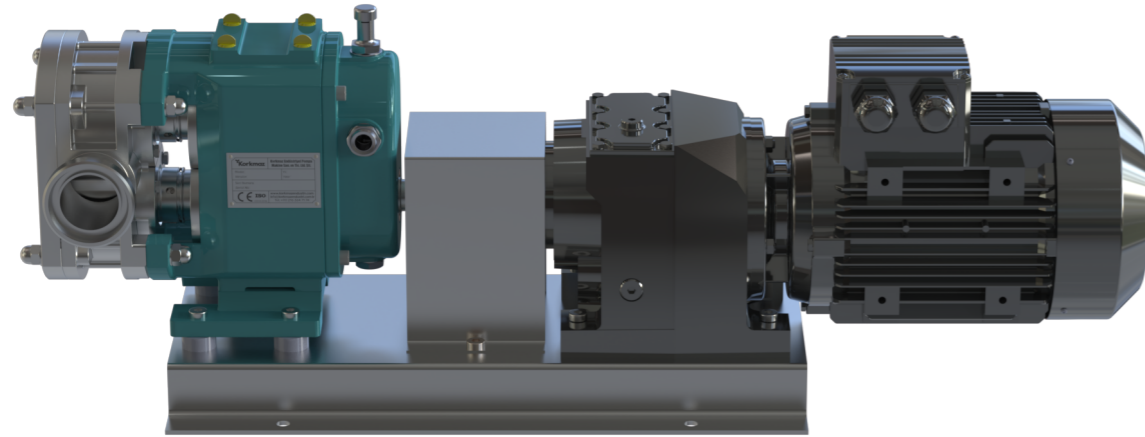
ACCORDING TO NEED

In situations where viscosity is high, the rotors are adapted to maintain the continuity of flow, enabling the pump to operate with a consistent flow rate. Additionally, to meet capacity requirements, the size and shape of the rotors are designed to make the most efficient use of the pump's total volume. This guarantees that the pump consistently operates at the targeted performance levels.

In conclusion, the design of lobe pump rotors is intrinsically linked to critical parameters such as pressure, flow rate, capacity, solid particle content, and viscosity. With the correct selection and optimization of rotor designs, the pump is capable of delivering reliable and effective performance in any industrial application."

CARBIDE SURFACE OPTIONS FOR MAXIMUM DURABILITY

The selection of these materials depends on the properties of the fluid being pumped and the operating conditions of the business, thereby maximizing the performance of your lobe pumps.

**01**

Silicon Carbide:

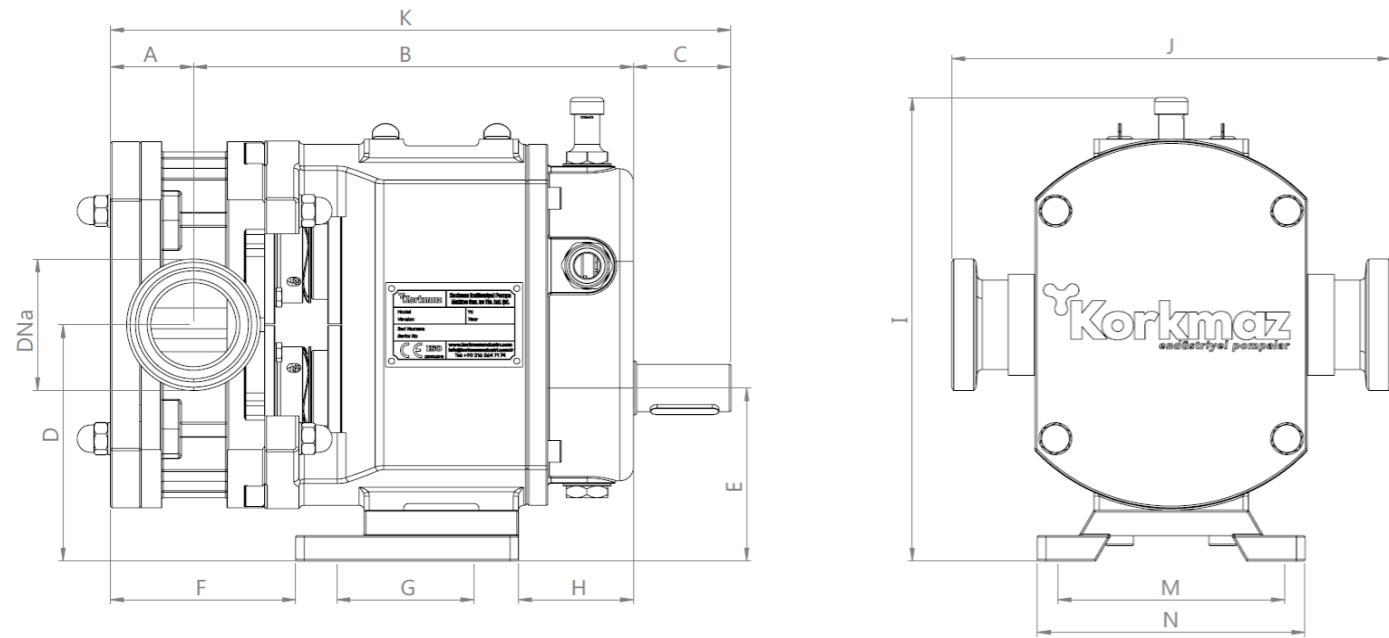
Silicon carbide stands out for its high hardness and wear resistance. This material is particularly preferred in applications where abrasive fluids are handled. Additionally, due to its high chemical resistance, it is ideal for use in corrosive environments and industries that work with aggressive chemicals. Silicon carbide is also known for its high temperature resistance, making it suitable for industrial processes that require high thermal endurance. It is frequently chosen in applications where hygiene is critical, such as food, beverage, pharmaceutical, and personal care products.

02

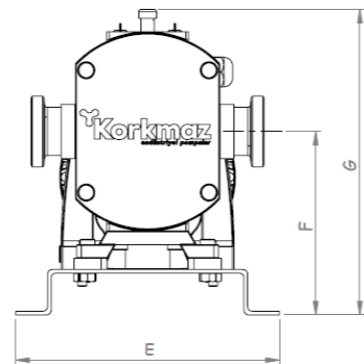
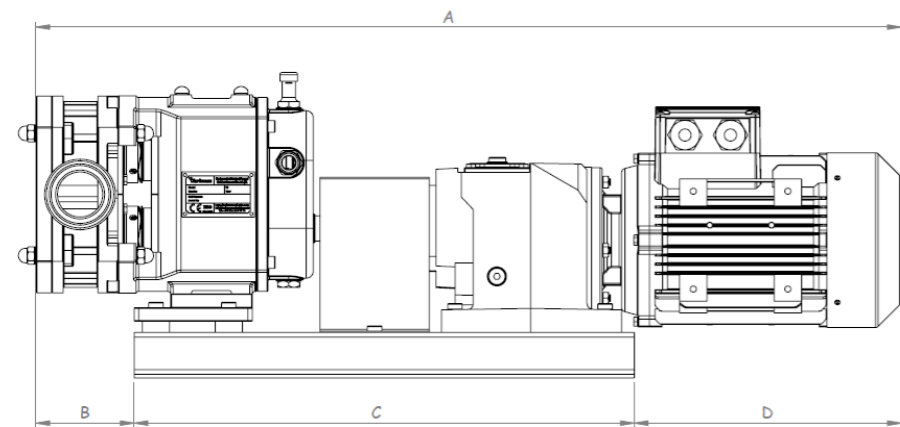
Tungsten Carbide:

Tungsten carbide is renowned for its extremely high hardness and excellent wear resistance. These characteristics make it ideal for heavy-duty applications and systems operating under high pressure. Tungsten carbide is particularly preferred in challenging environments where high-viscosity or solid-laden fluids are transported. In chemical and heavy industry applications, it is the best choice for situations requiring high mechanical strength. Its low coefficient of friction and high temperature resistance make tungsten carbide indispensable in applications that demand energy efficiency and long-lasting performance.



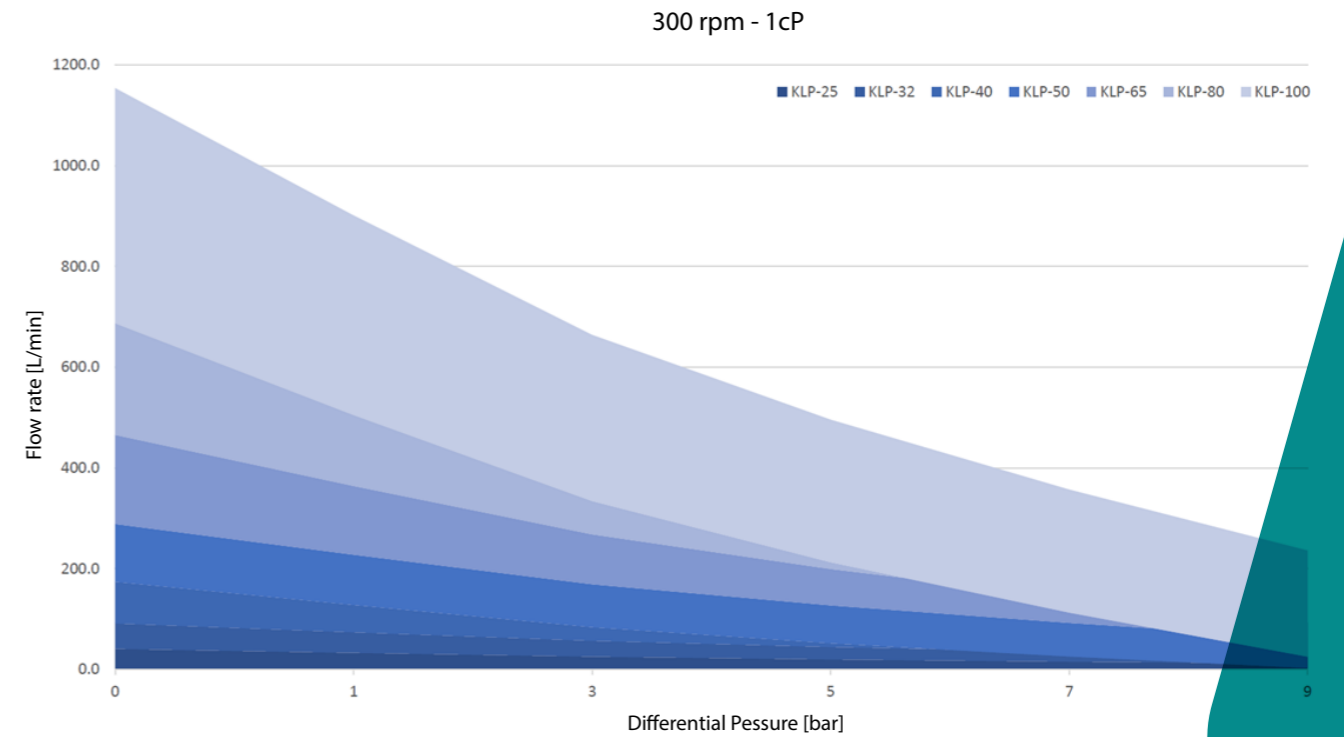


Pump Type	DNa	A	B	C	D	E	F	G	H	I	J	K	M	N
KLP-25	25,00	39,00	187,00	49,75	108,50	77,00	83,00	65,00	53,00	210,50	209,00	275,75	105,00	133,00
KLP-32	32,00	42,00	191,00	49,75	108,50	77,00	90,00	65,00	53,00	210,50	209,00	282,75	105,00	133,00
KLP-40	40,00	46,30	247,70	50,80	130,50	96,00	94,00	84,00	75,00	258,25	234,00	344,80	122,00	143,00
KLP-50	50,00	48,50	256,50	56,90	140,00	102,50	108,00	80,00	67,00	274,75	256,00	361,90	132,00	156,00
KLP-65	65,00	60,00	291,50	64,50	152,00	110,50	126,50	100,00	75,00	296,25	278,00	416,00	145,00	177,00
KLP-80	80,00	67,50	325,50	65,80	146,20	101,20	139,50	120,00	85,50	294,50	302,00	458,80	140,00	177,00
KLP-100	100,00	81,00	390,00	82,50	188,00	135,50	161,50	130,00	99,50	360,75	367,00	553,50	180,00	224,00



Pump Type	A	B	C	D	E	F	G
KLP-25	772,75	83,00	420,00	269,75	270,00	175,50	277,50
KLP-32	779,75	90,00	420,00	269,75	270,00	175,50	277,50
KLP-40	841,70	94,00	480,00	267,70	270,00	180,50	308,25
KLP-50	951,70	108,00	550,00	293,70	290,00	202,50	337,25
KLP-65	1031,10	129,00	580,00	322,10	290,00	210,50	354,75
KLP-80	1177,80	139,50	700,00	338,30	330,00	229,00	377,25
KLP-100	1293,50	161,50	750,00	382,00	330,00	246,50	419,25

Note: The specified dimensions may vary depending on the motor and reducer combinations. For different brands and models, engine sizes may increase or decrease depending on pressure and capacity requirements. Therefore, it is important to verify appropriate dimensions for each application.



	KLP-25	KLP-32	KLP-40	KLP-50	KLP-65	KLP-80	KLP-100
Max Capacity (m ³ /h)	1.800	3.800	9.000	13.200	21.600	31.200	52.800
Max Pressure (bar)	10	10	10	12	12	14	20
Max Viscosity (cP)	800.000	800.000	1.000.000	1.000.000	1.000.000	1.000.000	1.000.000

The product used in the table is water (1 cP), and capacity values may vary with different products. For accurate performance information and advice, please contact us.

